



**SD Card Formatter 4.0 for Windows
User's Manual**

Version 1.09

November 1, 2016

SD Card Association

Revision History

Date	Version	Changes compared to previous issue
Feb. 15, 2010	1.00	<ul style="list-style-type: none">• The first release.
Dec. 6, 2010	1.06	<ul style="list-style-type: none">• Change types of format operation• Add the notice for BitLocker To Go• Change sentences in this document• Change display images
June 15, 2011	1.07	<ul style="list-style-type: none">• Version 3.1
October 30, 2012	1.08	<ul style="list-style-type: none">• Version 4.0 Support Windows 8.0
November 1, 2016	1.09	<ul style="list-style-type: none">• Version 4.0 Support Windows 8.1

Publisher and copyright holder of this document

SD Card Association
2400 Camino Ramon, Suite 375
San Ramon, CA 94583 USA
Telephone: +1 (925) 275-6615,
Fax: +1 (925) 886-4870
E-mail: office@sdc card.org

Disclaimers

Downloading or using the SD Card Formatter is required to agree on the "End User License Agreement" shown in the SDA website when downloading the SD Card Formatter.

Copyright holder of SD Card Formatter 4.0

Trendy Corporation and Panasonic Corporation jointly own copyright of SD Card Formatter 4.0 programs for both the source code and object code.

Trademark Notice

SD Logo, SDHC Logo and SDXC Logo are trademarks of SD-3C, LLC.

Microsoft and Windows are either registered trademarks or trademarks of Microsoft Corporation in the United States and/or other countries.

Other product names and company names described in this document are trademarks or registered trademarks.

Table of Contents

1. Introduction	- 3 -
2. System Requirements	- 3 -
2.1 Operating Systems	- 3 -
2.2 SD Interface Devices.....	- 4 -
3. Installation of SD Card Formatter	- 4 -
4. Uninstallation of SD Card Formatter	- 4 -
4.1 Windows 8, Windows 8.1	- 4 -
4.2 Windows 7.....	- 4 -
4.3 Windows Vista.....	- 5 -
4.4 Windows XP.....	- 5 -
5. Operation Guide	- 6 -
5.1 Description of SD Card Formatter Window.....	- 6 -
5.1.1 SD Card Formatter Main Window.....	- 6 -
5.1.2 Format Option Window	- 8 -
5.2 Completing Formatting	- 9 -
5.3 Cancel Format Operation	- 10 -
5.4 SD Card Formatter Version Information.....	- 11 -
6. Important Notice	- 12 -

Table of Figures

Figure 1: SD Card Formatter Main Window	- 6 -
Figure 2: Format Option Window.....	- 8 -
Figure 3: Window on Completing Formatting.....	- 9 -
Figure 4: Cancel Formatting	- 10 -
Figure 5: After Cancel Formatting.....	- 10 -
Figure 6: SD Card Formatter Icon	- 11 -
Figure 7: Version Information.....	- 11 -

1. Introduction

The SD Card Formatter formats SD Memory Card, SDHC Memory Card and SDXC Memory Card (collectively SD/SDHC/SDXC Cards) complying with the SD File System Specification created by SD Association (SDA).

The SD Card Formatter formats SD/SDHC/SDXC Cards optimizing with these card's performance etc.. It is strongly recommended to use the SD Card Formatter to format SD/SDHC/SDXC Cards rather than using formatting tools provided with operating systems. In general, formatting tools provided with operating systems can format various storage media including SD/SDHC/SDXC Cards, but it may not be optimized for SD/SDHC/SDXC Cards and it may result in lower performance than using the SD Card Formatter.

SD/SDHC/SDXC Cards have "Protected Area" in the card for SD security function. The SD Card Formatter will not format the "Protected Area". Please use appropriate application software or SD host device which provides SD security function to format the "Protected Area" in the card.

SD Card Formatter does not support the SD/SDHC/SDXC card encrypted by the "BitLocker To Go" function of Windows. Please format the SD/SDHC/SDXC card after it is unlocked by the method specified by Windows.

2. System Requirements

2.1 Operating Systems

(1) For SD/SDHC Cards

- Windows 8.1
- Windows 8
- Windows 7
- Windows Vista
- Windows XP (32-bit OS only)

(2) For SDXC Card

- Windows 8.1
- Windows 8
- Windows 7
- Windows Vista (SP1 or later)
- Windows XP (32-bit OS, and SP2 or later) with the exFAT file system update (KB955704)
The exFAT file system update is available at the following Microsoft Download Center:
<http://www.microsoft.com/downloads/details.aspx?FamilyID=1cbe3906-ddd1-4ca2-b727-c2dff5e30f61&displaylang=en>

Important Notice:

Windows Administrator Rights is required for execution of SD Card Formatter

2.2 SD Interface Devices

The following interface devices to access SD/SDHC/SDXC Card are available:

- SD slot on PC
- USB SD reader
- PC Card, CardBus or ExpressCard SD adapter

Please check your SD interface device is compatible with your SD, SDHC or SDXC Card before formatting.

3. Installation of SD Card Formatter

- (1) Close all application programs on your PC.
- (2) Execute the SD Card Formatter installation program which you downloaded from SDA website.
- (3) Follow the instructions from the SD Card Formatter installation program and complete the installation.

Note: If you have installed the SD Card Formatter already, you must uninstall the SD Card Formatter as described below, then install the SD Card Formatter again.

If "User Account Control" window is displayed on the screen during the installation, please click on [Allow].

4. Uninstallation of SD Card Formatter

4.1 Windows 8, Windows 8.1

- (1) Right-click on [SD Card Formatter] icon in Start
- (2) Click on [Uninstall].
- (3) Click on [SD Card Formatter]
- (4) Click on [Uninstall].
- (5) If confirmation windows is displayed on the screen, click on [Yes].
- (6) If "User Account Control" window is displayed on the screen, please click on [Yes].
- (7) Follow the instructions during the uninstallation of SD Card Formatter.

4.2 Windows 7

- (1) Click on [Start] then click on [Control Panel].
- (2) Click on [Uninstall a program].
If View is "Big Icon" or "Small Icon", click on [Program and function].
- (3) Double click on [SD Card Formatter].
- (4) If confirmation window is displayed on the screen, click on [YES].
- (5) If "User Account Control" window is displayed on the screen, please click on [Continue].
- (6) Follow the instructions during the uninstallation of SD Card Formatter.

4.3 Windows Vista

- (1) Click on [Start] then click on [Control Panel].
In case of "Classic Start Menu", click on [Start] and point to [Settings], then click on [Control Panel].
- (2) Click on [Uninstall a program].
In case of "Classic View", click on [Program and Function].
- (3) Double click on [SD Card Formatter].
- (4) If confirmation window is displayed on the screen, click on [YES].
- (5) If "User Account Control" window is displayed on the screen, click on [Continue].
- (6) Follow the instructions during the uninstallation of SD Card Formatter.

4.4 Windows XP

- (1) Click on [Start] then click on Windows [Control Panel].
If you cannot find [Setting] and/or [Control Panel] from [Start] menu, click on [Start], then click on [My Computer] and [Change a setting] or [Control Panel] that exists on the left side of my computer menu.
- (2) Click on [Add or Remove Programs].
- (3) Select "SD Card Formatter" and click on [Change/Remove].
- (4) If confirmation window is displayed on the screen, click on [YES].
- (5) Follow the instructions during the uninstallation of SD Card Formatter.

5. Operation Guide

5.1 Description of SD Card Formatter Window

5.1.1 SD Card Formatter Main Window

When the SD Card Formatter is starting up, the following main window is shown on the screen. Formatting of SD/SDHC/SDXC Card is executed by clicking on the [Format] button in this window.

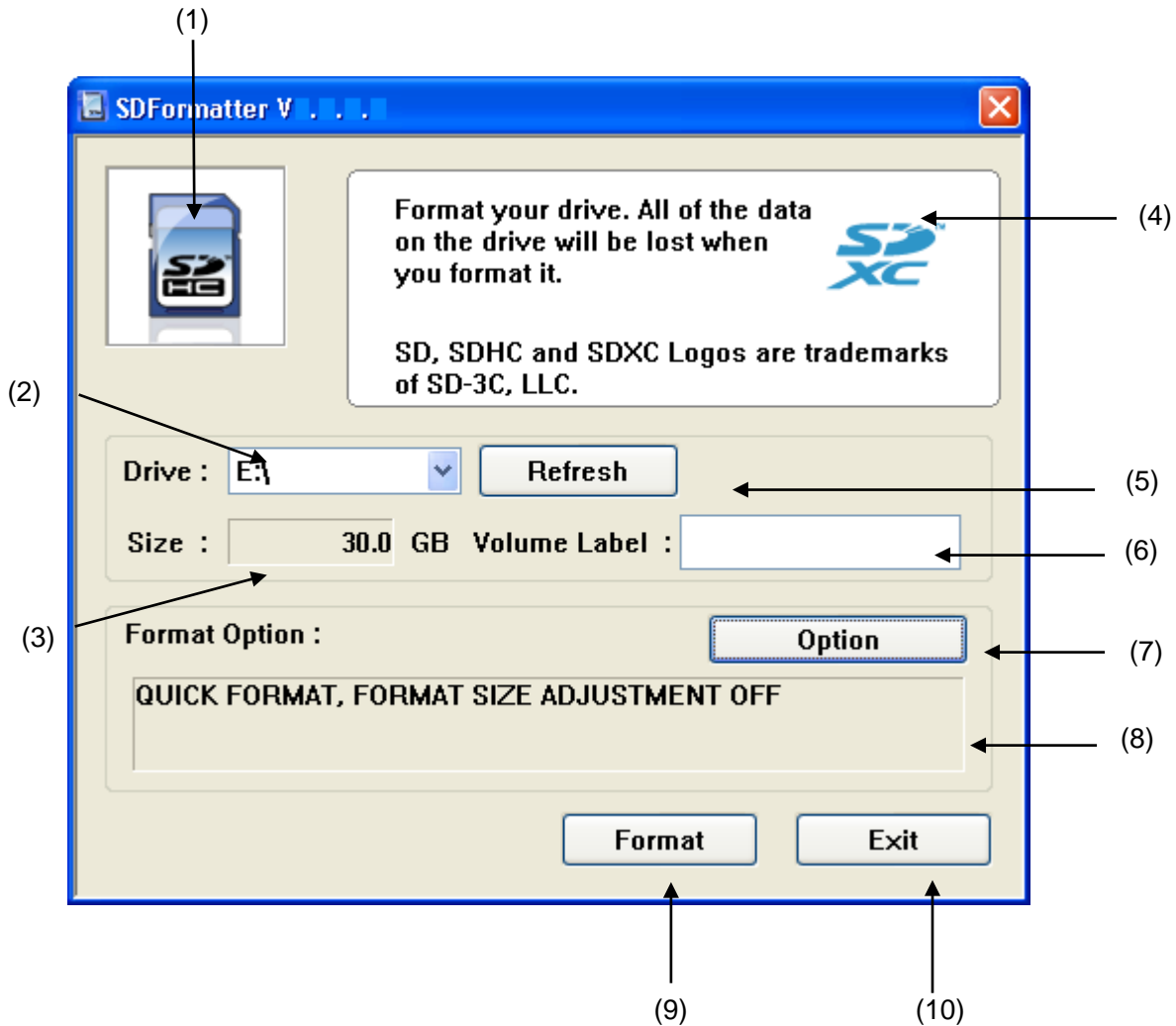


Figure 1: SD Card Formatter Main Window

- (1) Status
This field indicates the status of SD/SDHC/SDXC Card and its interface device.
Blue: They are functional.
No Logo: Either SD/SDHC/SDXC Card or SD interface device is disabled.
Gray: They are disabled. It may be no SD/SDHC/SDXC Card is recognized by the SD Card Formatter.
- (2) Drive
This list indicates drives of SD/SDHC/SDXC Cards recognized by the SD Card Formatter. A drive on this list can be selected for formatting the card.
- (3) Size
This field indicates the capacity of SD/SDHC/SDXC Card on the selected drive.
- (4) Message Area
This area shows messages or instructions to users.
- (5) Refresh Button
This button is used to update the information of SD/SDHC/SDXC Card drives. When this button is clicked, the SD Card Formatter obtains the latest information of SD/SDHC/SDXC Card drives. Click this button when new SD/SDHC/SDXC Card is inserted to an SD interface device.
- (6) Volume Label
This field is used to display volume label written in the card and enter new volume label to be written into the card during formatting. You can enter up to 11 characters in the Volume Label field. If volume label has been written in the card in other language except English, this field may not be shown correctly. In this case, you should enter new volume label.
- (7) Option Button
This button is used to select options of the format operation. When this button is clicked, the format option window is displayed on the screen. Refer to 5.1.2 Format Option Windows for more information.
- (8) Format Options
This area indicates the current format options selected in the Format Option Window.
- (9) Format Button
This button starts the format operation. After clicking on this button, the confirmation window will be shown on the screen. You can continue or cancel the formatting.
- (10) Exit Button
This button is used to terminate the SD Card Formatter.

5.1.2 Format Option Window

When [Option] button is clicked, the following Format Option Window is displayed on the screen. The following format options can be selected.

- Types of formatting operations
- Format Size Adjustment options

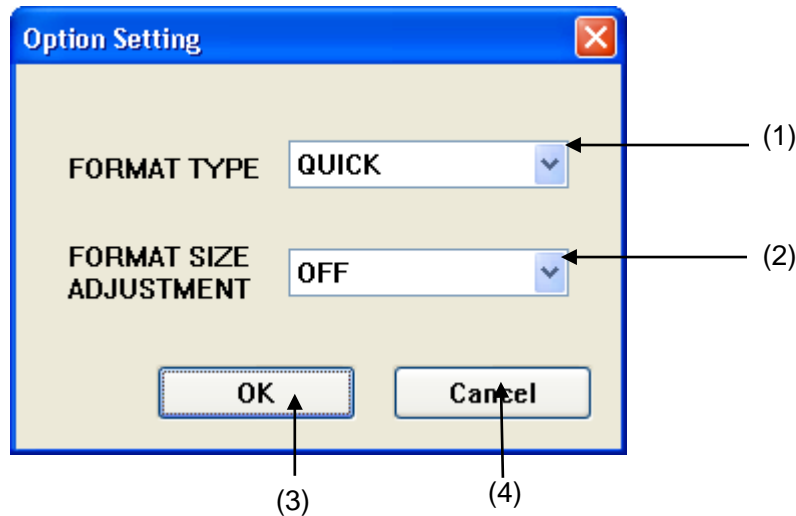


Figure 2: Format Option Window

(1) Types of formatting operations

The following types of formatting operations are shown on the list:

- QUICK
- FULL (Erase)
- FULL (OverWrite)

QUICK:

This option is a quick formatting and only initializes the file system parameters in the card, but not initializes user data area in your card. If you need to initialize user data area, use the other types of formatting operations shown below.

FULL (Erase):

This option initializes the file system parameter in the card, and initializes all the user data areas (Initialize it by executing erase processing (data deletion) of the card to all the user data areas). This option has the possibility that it takes the format time long according to the capacity of card. There is something that doesn't support to the erase processing according to the SD interface device. The erase processing is skipped when "FULL (erase)" format type is selected in the unsupported environment. In this case it is same as selected QUICK option.

FULL (OverWrite):

This option initializes the file system parameter in the card, and initializes all the user data areas (Initialize it by overwriting the meaningless data to all the user data areas). This option has the possibility that it takes the format time long according to the capacity of the card.

(2) Format Size Adjustment

If the formatted capacity of the card is not a multiple of capacity in a cylinder, some hosts may not access the card successfully. This option adjusts formatted capacity to a multiple of capacity in a cylinder.

OFF:

This option does not adjust the formatted capacity. Usually, this option should be selected.

ON:

This option adjusts the formatted capacity to a multiple of capacity in a cylinder. This option may reduce the formatted capacity.

This option should be used by specific users who encountered a trouble with formatted capacity.

(3) OK Button

This button applies the selected option and quits from the window.

(4) Cancel Button

This button is used to cancel the selected option and quits from the window.

5.2 Completing Formatting

When completing the formatting, the following window is shown on the screen with formatted information.

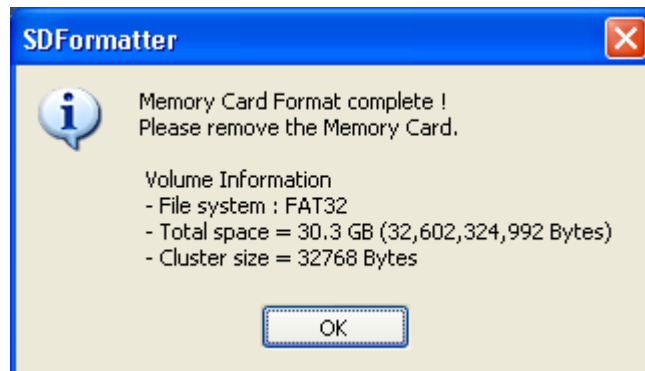


Figure 3: Window on Completing Formatting

5.3 Cancel Format Operation

You can cancel formatting operation during either "FULL (Erase) "or "FULL (OverWrite)" formatting.

- (1) Click on "Cancel" button during the formatting operation if you want to cancel it.

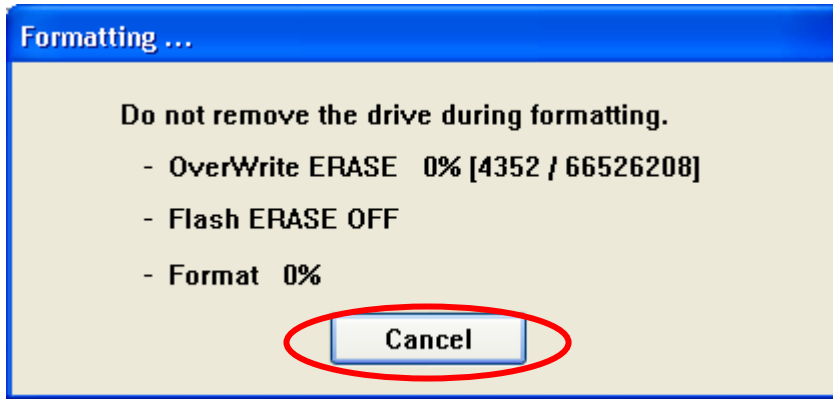


Figure 4: Cancel Formatting

- (2) If you cancel the formatting, user data will not be erased or overwritten, but the file system parameters are initialized as same as the QUICK formatting. The following window will be shown after cancelling the formatting.

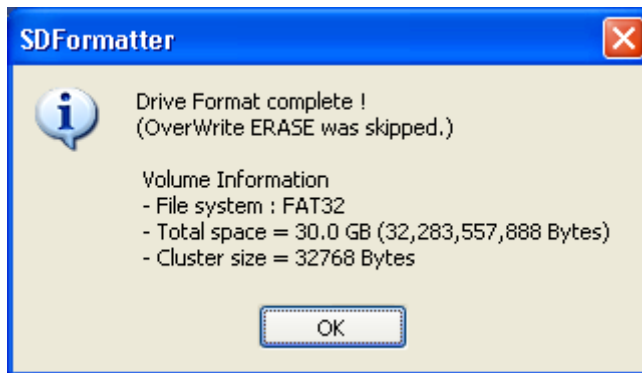


Figure 5: After Cancel Formatting

5.4 SD Card Formatter Version Information

Click on the following SD Card Formatter Icon and select “About SD Card Formatter (A)” to display the version information.

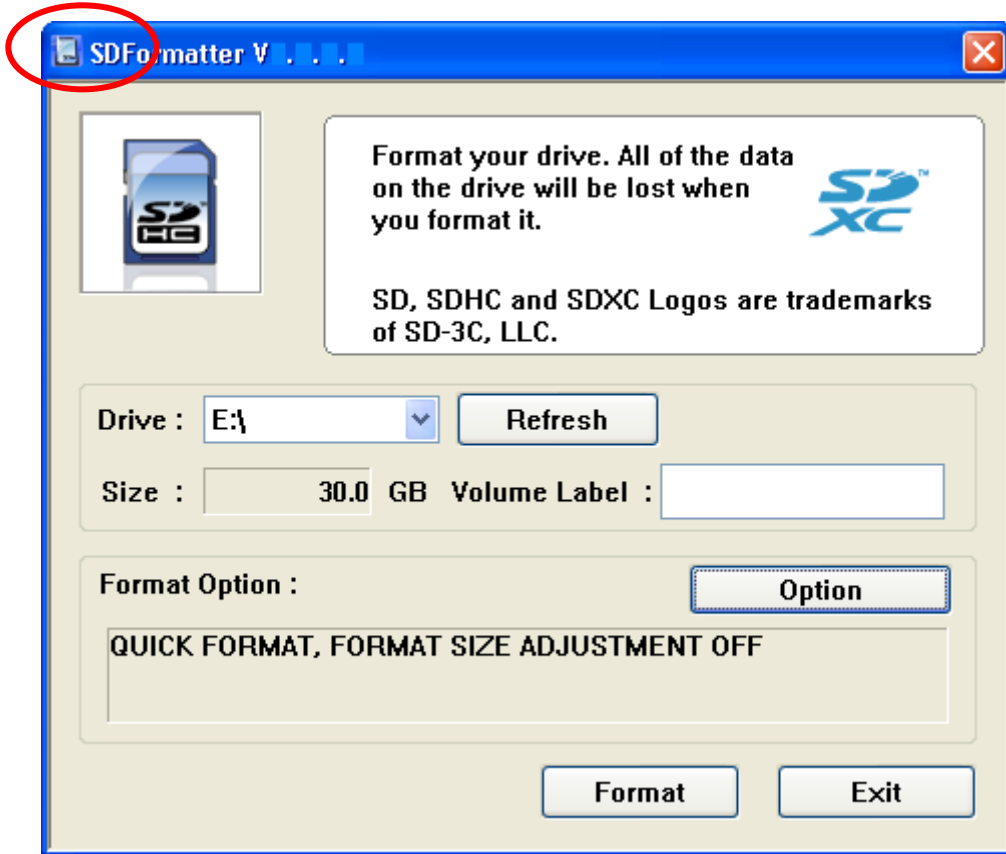


Figure 6: SD Card Formatter Icon

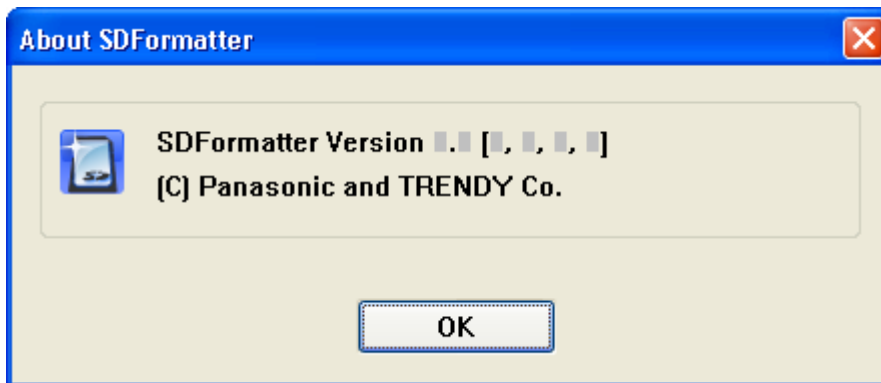


Figure 7: Version Information

6. Important Notice

- (1) Do not format recordable media other than SD/SDHC/SDXC Cards using the SD Card Formatter. If you accidentally formatted a recordable media other than SD/SDHC/SDXC Cards, reformat the media using the appropriate formatting software which came with the media.
- (2) Do not remove the SD/SDHC/SDXC Cards while formatting.
- (3) Once formatting has started, all recorded information will be no longer available.
- (4) Check the position of Write Protect Switch on your card before formatting. The position shall be on the NOT PROTECTED position.
- (5) If the SD Card Formatter does not recognize the SD/SDHC/SDXC Card, re-insert the card and click on "Refresh" button.
- (6) The SD Card Formatter does not format the protected area in the SD/SDHC/SDXC Cards. The protected area shall be formatted by appropriate PC application software or an SD host devices which provide SD security function.
- (7) If the SD/SDHC/SDXC Card cannot be recognized by the SD Card Formatter after the card is inserted into an SD interface device (SD slot on PC, USB SD reader or SD adapter), check the SD interface device is compatible with SD/SDHC/SDXC Card. Some of SD interface devices are interoperable only with SD Card or SDHC Card. And, Some PCs need to install drivers and file systems to work with SD/SDHC/SDXC Cards.
If your system is compatible with SD/SDHC/SDXC Cards but the card is not recognized, try to restart your PC and execute the SD Card Formatter again.
- (8) If you choose QUICK format option, all files in the card are deleted and disappear from PC. However, files may be restored by using data recovery software.
Please use "FULL(Erase)" or "FULL(OverWrite)" formatting option if you want to discard data in the files completely to avoid restore data in the SD Card.
- (9) SD Card Formatter does not support the SD/SDHC/SDXC card encrypted by the "BitLocker To Go" function of Windows. Please format the SD/SDHC/SDXC card after unlocking "BitLocker To Go" by the method specified by Windows.